

**ITEM 35. CAR SHARE – VICTORIA ROAD GLEBE**

**TRIM RECORD NO: 2014/471541**

**RECOMMENDATION**

It is recommended that the Committee endorse the allocation of parking on the northern side of Victoria Road, Glebe between the points 20.2 metres and 25.2 metres (1 car space) east of Maxwell Road as “No Parking Car Share Vehicles Excepted” subject to the following:

- (A) The City will only install signage for the car share space when GoGet has a car to occupy the space.

**DECISION**

**BACKGROUND**

The City is committed to providing dedicated parking for car sharing across the Local Government Area as part of a Council approved Car Share Policy. A submission has been received from GoGet for a car share space in Victoria Road, Glebe, east of Maxwell Road.

**COMMENTS**

The kerb space on the northern side of Victoria Road, Glebe between Alexandra Lane and Maxwell Road is currently unrestricted for parking.

The car share space will be installed and managed in accordance with the Roads and Maritime Service’s Technical Direction 2007/04 and the provisions of the Council-approved Car Share Policy.

Car sharing is popular in more than 600 cities worldwide, and research has shown substantial environmental benefits. Car sharing reduces total urban driving, reduces household vehicle holdings, and increases walking, cycling and public transport use.

On average, each car share vehicle in the City can replace up to 12 private vehicles that would otherwise compete for parking. In the twelve months to April 2014, membership in the City has risen by around 418 members per month.

Current membership is approximately 21,706, of which 6,045 are business members.

As of October 2014, there were 18 GoGet car share members within a 250 metre radius of this location with nine members in Victoria Road, two members in Alexandra Road, and seven members in Avenue Road.

Within a 250 metre radius of this location, there are currently no spaces allocated for GoGet car share vehicles.

**CONSULTATION**

The City consulted local residents and businesses in the area. There were 22 letters sent out with two responses supporting the proposal and one response opposing the proposal due to loss of parking.

The resident supporting the proposal supports the scheme being extended to provide an alternative to private car ownership and reducing the number of cars around the City.

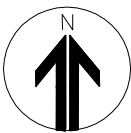
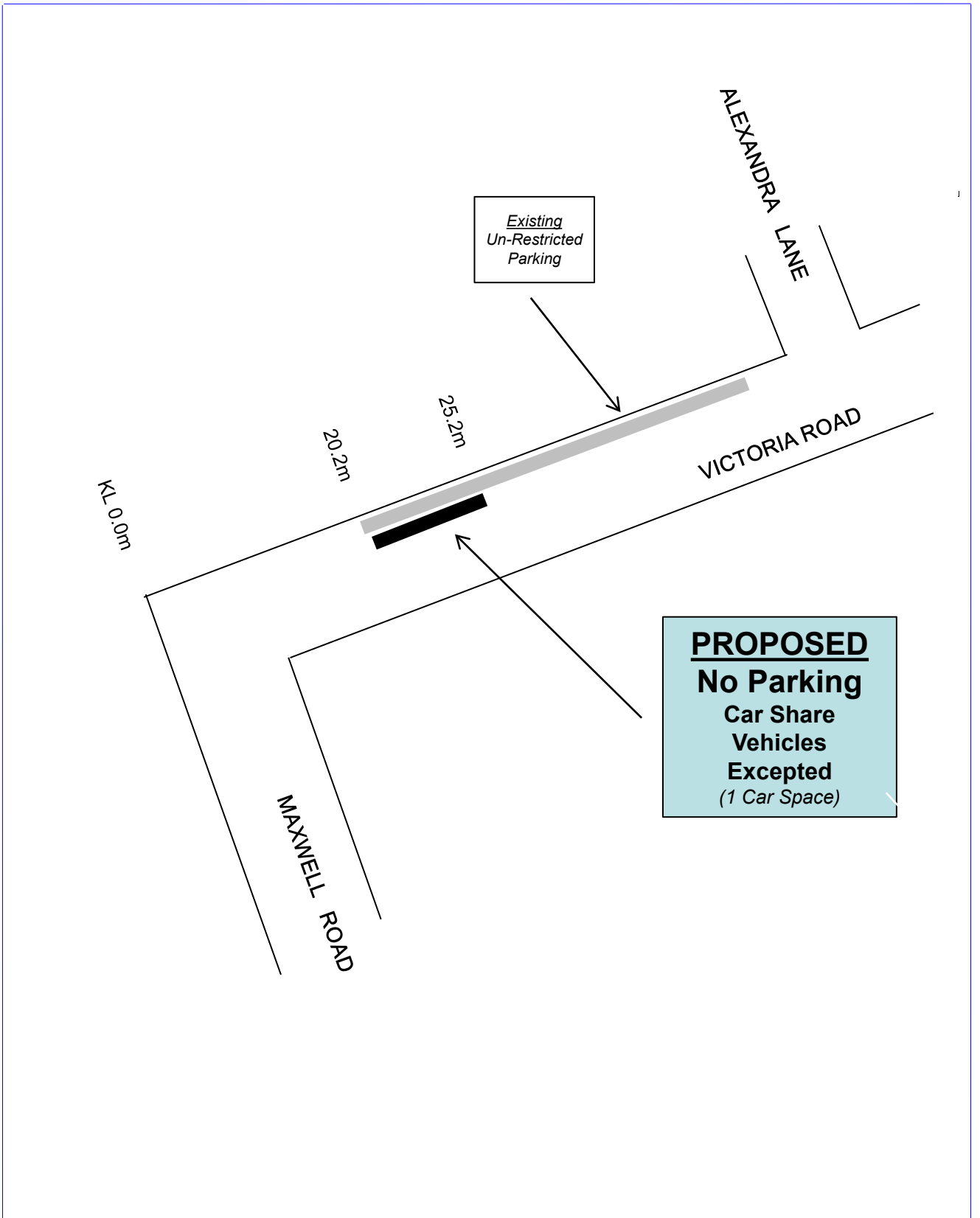
**FINANCIAL**

Funds are available in the current budget.

**ATTACHMENTS**

Car Share – Victoria Road Glebe

Claudia Calabro, Business Support Officer



PROPOSAL

VICTORIA ROAD, GLEBE  
 CAR SHARE PARKING SPACE



